



(Optional Garage Shown)

### FRONT ELEVATION



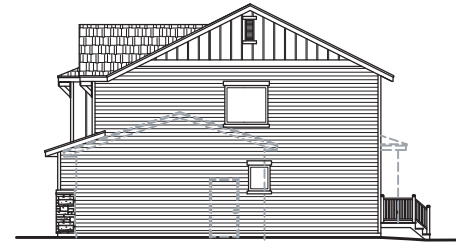
(Optional Garage & Pop - Out Shown)

### REAR ELEVATION



(Optional Pop - Out & Window Shown)

### LEFT ELEVATION



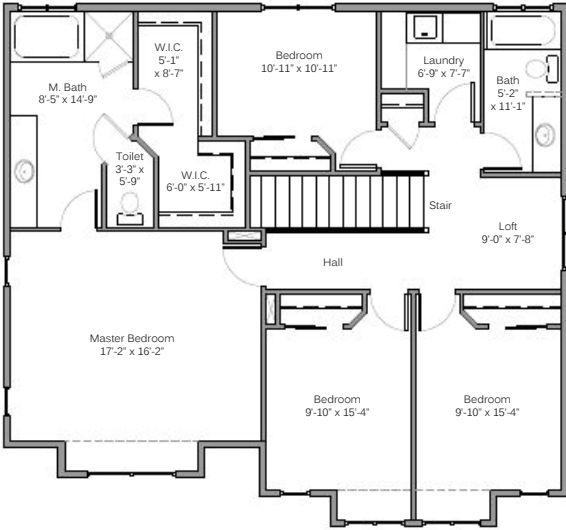
(Optional Garage, Door, & Pop - Out Shown)

### RIGHT ELEVATION

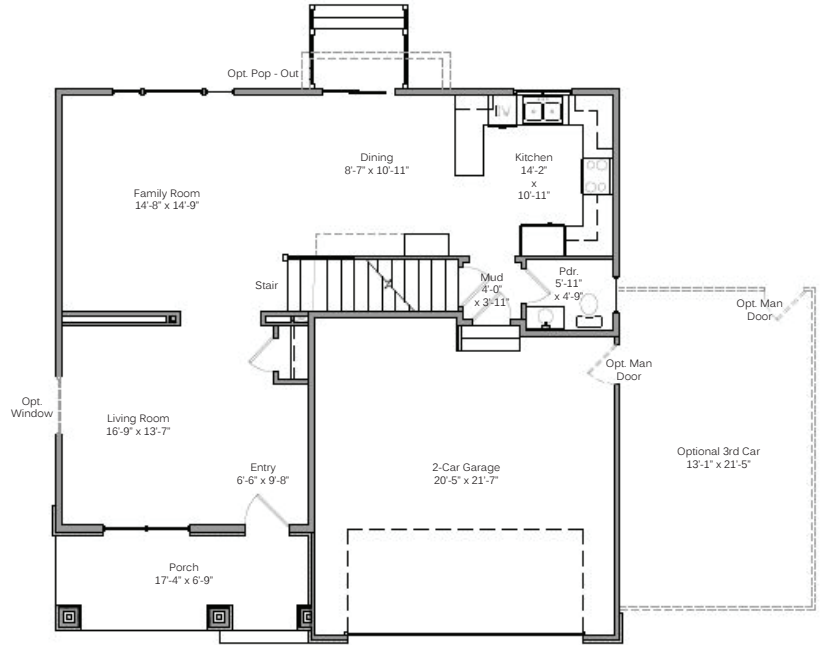
#### THE PAIGE

- Large master bath w/ his/hers walk - in closet
- Laundry by upstairs bedrooms
- 4 bedrooms/ 2 1/2 baths finished
- Covered porch/ cold storage
- Elegant craftsman design

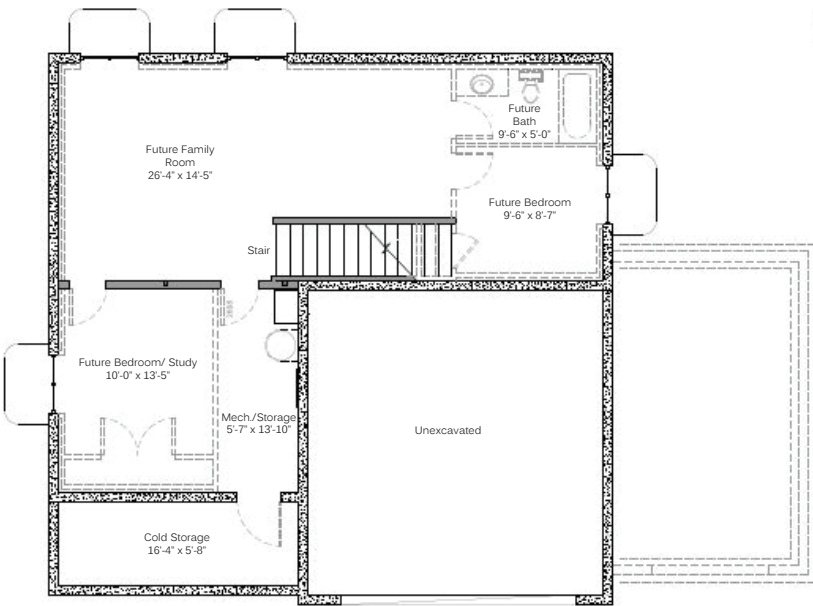
<b>Overall dimensions:</b>	W: 38'-4" x D: 37'-6"
<b>Finished square feet:</b>	2,096
<b>Unfinished square feet:</b>	988
<b>Total square feet:</b>	3,084



UPPER FLOOR



MAIN FLOOR



BASEMENT FLOOR