



www.sierrahomes.com

*We build dreams one home at a time!*

### THE PATRIOT

- MAIN FLOOR SQ. FT. 1,629
- 3 BEDROOMS
- 2 BATHROOMS
- MASTER SUITE
- WALK-IN-CLOSET
- LAUNDRY NEXT TO KITCHEN
- VAULTED CEILINGS
- 2 TONE PAINT
- LOW-E WINDOWS
- WINDOWS LIFETIME WARRANTY
- ARCHITECTURAL SHINGLES
- 2X6 EXTERIOR WALLS
- DECOR CASED WINDOWS
- GRAND MASTER BATH
- KITCHEN ISLAND

### OPTIONS

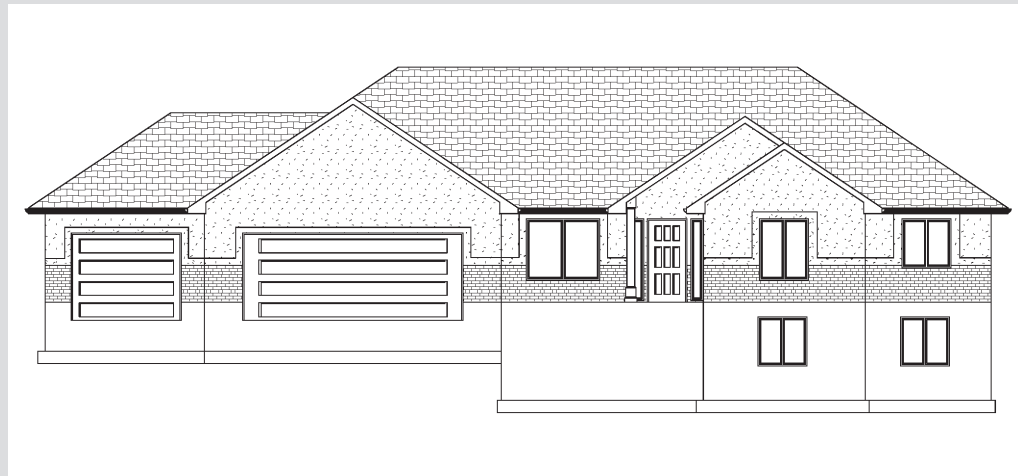
- 3 CAR GARAGE
- BASEMENT
- BONUS ROOM
- BAY WINDOWS
- FIREPLACE
- COVERED PATIO
- DECK
- RV PAD
- BUILT IN CLOSET ORGANIZER



**2 CAR GARAGE**



**2 CAR GARAGE WITH OPTIONAL BASEMENT**



**OPTIONAL 3 CAR GARAGE AND BASEMENT**

### SIERRA HOMES LOCATIONS:

- OGDEN
- TREMONTON
- BRIGHAM CITY
- NIBLEY
- WELLSVILLE
- HYRUM
- NORTH LOGAN



**SIERRA**  
• H O M E S •

www.sierrahomes.com

*We build dreams one home at a time!*

### THE PATRIOT

