



SIERRA

• H O M E S •

www.sierrahomes.com

We build dreams one home at a time!

THE SANDPOINT

TOTAL SQ. FT. 1,780

MAIN SQ. FT. 761

UPPER SQ. FT. 1,019

3 BEDROOMS

2 1/2 BATHROOMS

LARGE FAMILY ROOM

2 TONE PAINT

LOW-E WINDOWS

WINDOWS LIFETIME WARRANTY

ARCHITECTURAL SHINGLES

2X6 EXTERIOR WALLS

DECOR CASED WINDOWS

BONUS ROOM

OPTIONS

3 CAR GARAGE

BASEMENT

BAY WINDOWS

FIREPLACE

COVERED PATIO

DECK

RV PAD

BUILT IN CLOSET ORGANIZER

BAR IN KITCHEN



SIERRA HOMES LOCATIONS:

OGDEN

TREMONTON

BRIGHAM CITY

NIBLEY

WELLSVILLE

HYRUM

NORTH LOGAN

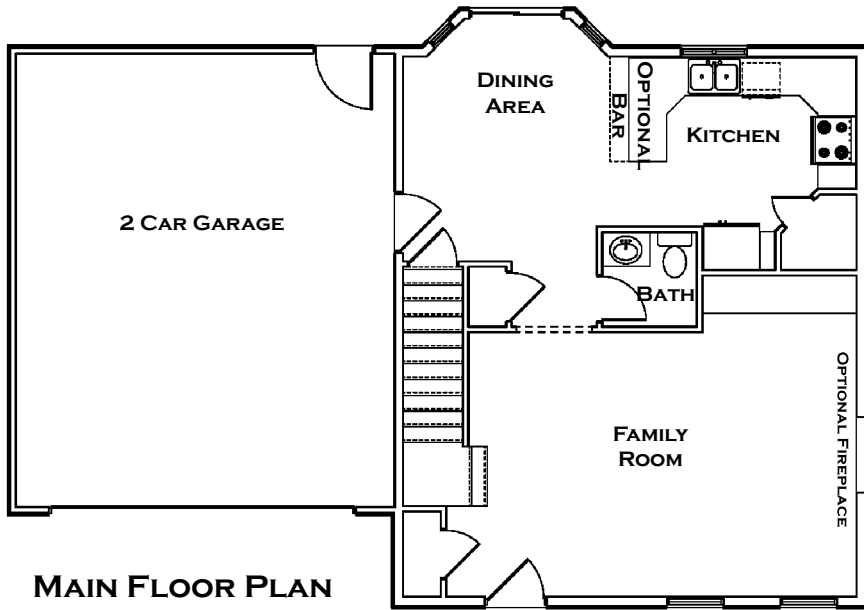


SIERRA
• H O M E S •

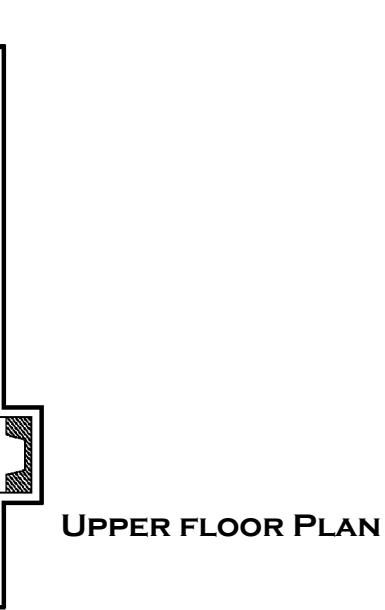
www.sierrahomes.com

We build dreams one home at a time!

THE SANDPOINT



MAIN FLOOR PLAN



UPPER FLOOR PLAN

COVERED ENTRY

