



Home

Plan: R-1349

Main: 1349 SF

Unfinished Basement: 1349 SF

Total SF: 2,698

Description:

3 Bedrooms

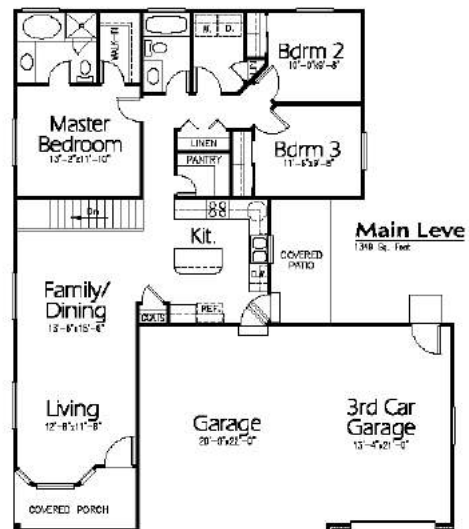
2 Baths

2 Car Garage

Optional Items:

3 Car Garage Finished Basement

Covered Porch/patio



© Copyright 2014 Steve Austin Homes, Inc. All rights reserved.