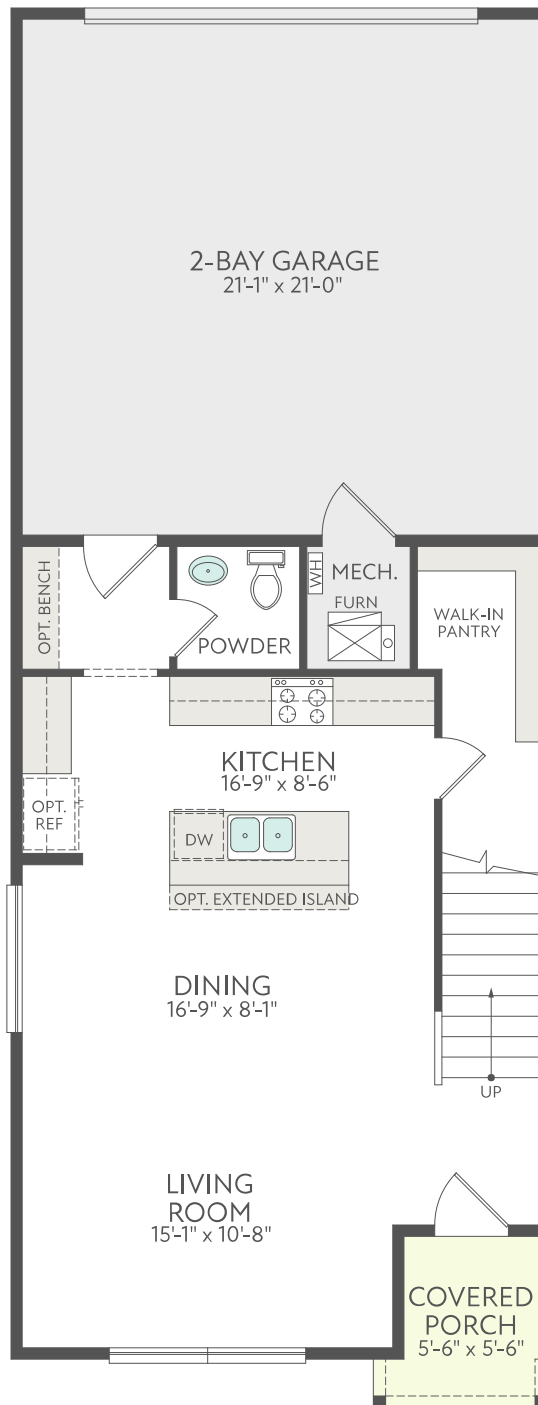


Keystone Construction - The Teton

3-4 Beds • 2.5 Baths • 2 Car Garage 1,896 Sq. Ft. • 2 Story

First Floor



<http://KeyStoneConstructionbuilders.com/>

Keystone Construction reserves the right to modify or change at any time our floor plans, included features, materials, and pricing. All floor plans, elevations, dimensions, and square footages are approximates. Artistic renderings and may not be to scale. See a Keystone representative for more details.

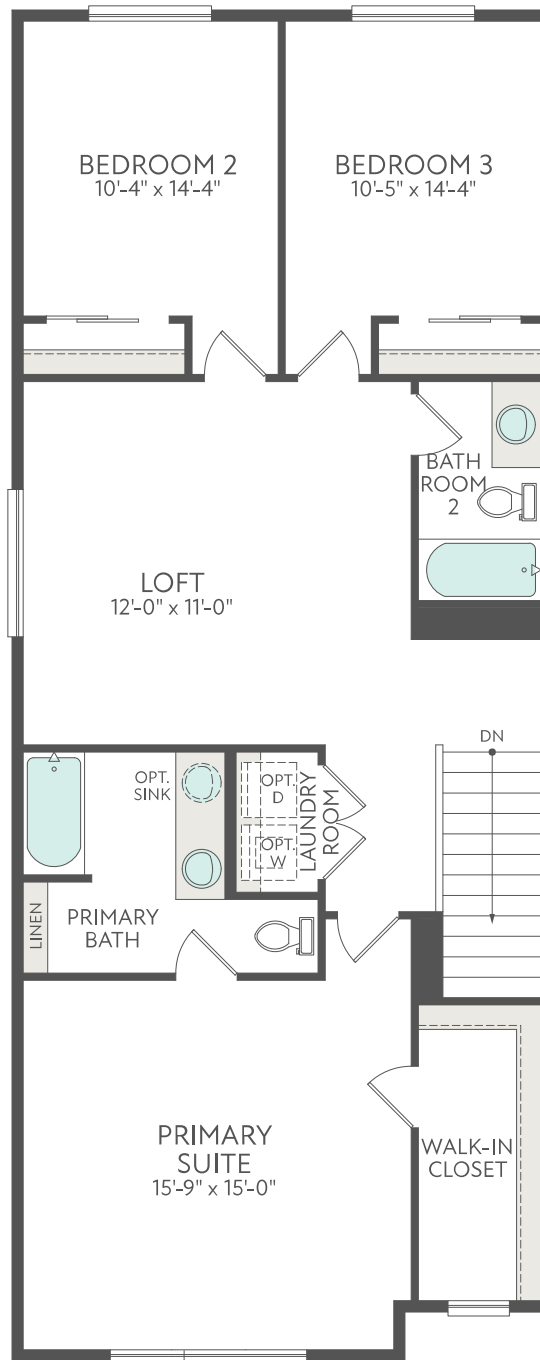


KEYSTONE
CONSTRUCTION

Keystone Construction - The Teton

3-4 Beds • 2.5 Baths • 2 Car Garage 1,896 Sq. Ft. • 2 Story

Second Floor



<http://KeystoneConstructionbuilders.com/>

Keystone Construction reserves the right to modify or change at any time our floor plans, included features, materials, and pricing. All floor plans, elevations, dimensions, and square footages are approximates. Artistic renderings and may not be to scale. See a Keystone representative for more details.



KEYSTONE
CONSTRUCTION

Keystone Construction - The Teton

3-4 Beds • 2.5 Baths • 2 Car Garage 1,896 Sq. Ft. • 2 Story



<http://KeyStoneConstructionbuilders.com/>

Keystone Construction reserves the right to modify or change at any time our floor plans, included features, materials, and pricing. All floor plans, elevations, dimensions, and square footages are approximates. Artistic renderings and may not be to scale. See a Keystone representative for more details.



Keystone Construction - The Teton

3-4 Beds • 2.5 Baths • 2 Car Garage 1,896 Sq. Ft. • 2 Story

Selected Options

Elevations Options

- Townhouse Scheme 1

<http://KeyStoneConstructionbuilders.com/>

Keystone Construction reserves the right to modify or change at any time our floor plans, included features, materials, and pricing. All floor plans, elevations, dimensions, and square footages are approximates. Artistic renderings and may not be to scale. See a Keystone representative for more details.



