



# Hello, Welcome to Evans Park

## COMMUNITY/HOME FEATURES

### 01 Great Design

Thoughtfully Designed Homes with space and light in mind.

### 02 Upgraded Selections

Interior Features include upgraded countertops, cabinets & flooring

### 03 Large Open Spaces

Homes include great size lots, open floorplans and 3-car garages.

### 04 Community

Evans Park is the perfect location, tucked away from the busy traffic of the city, but close to shopping, dining and entertainment.

## EVANS PARK

Our new communities in West Valley City are located within minutes of each other and offer the same great homes with the option of location.

Evans Park is a small, secluded neighborhood within an existing neighborhood.

Featuring six fresh and modern floorplans that offer spacious rooms, lots of light, and open spaces. Each home is unique in its design and offers upgraded features, 3-car garage, large lots, and many selections and colors to choose from.

Evans Park is a great neighborhood with mature trees and is the perfect location for a brand-new home in an established area.

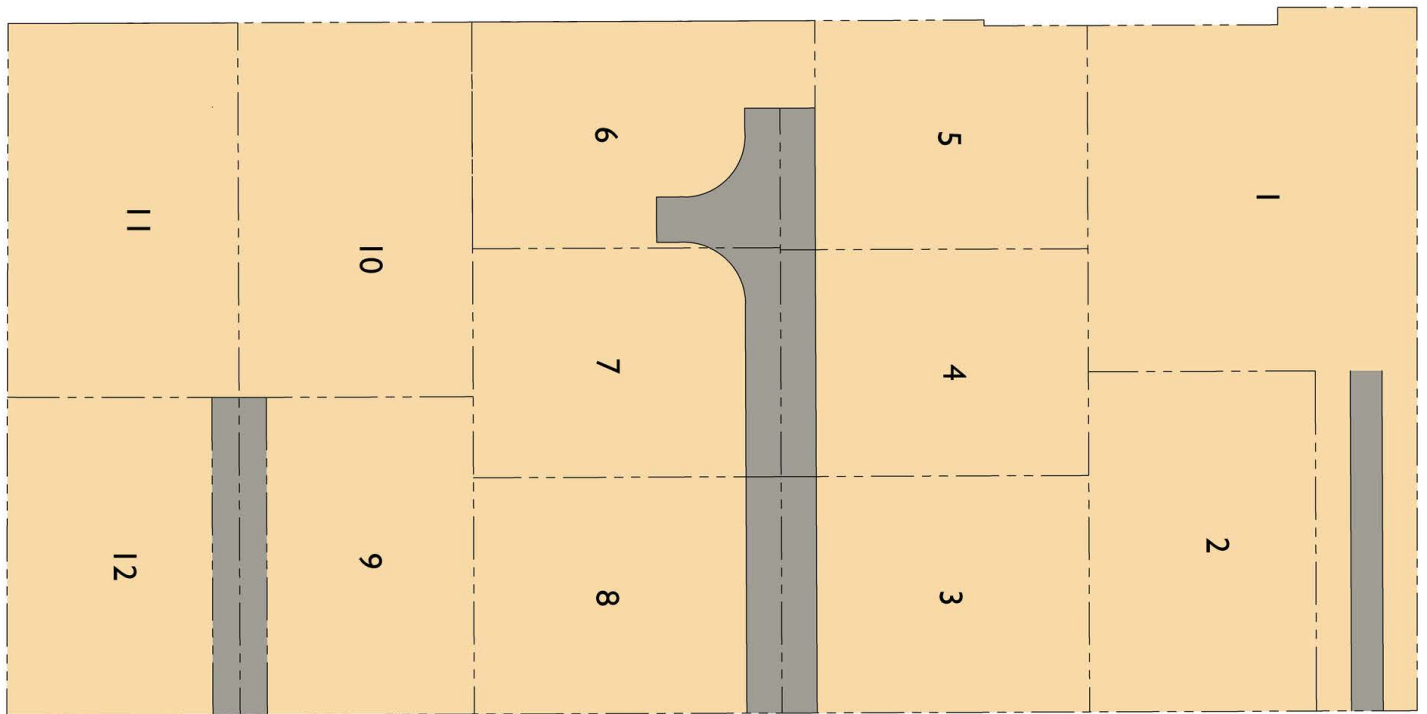
Located at: 5450 West and 3500 South in West Valley City, UT 84120

801-736-1953

[www.hamlethomes.com](http://www.hamlethomes.com)



**Your new home is waiting at  
Evans Park.**



5450 West

Located at: 3500 South 5450 West in West Valley City, UT 84120

**801-736-1953**

[www.hamlethomes.com](http://www.hamlethomes.com)



# Evans Park Standard Features

## EXTERIOR FEATURES

- 3-Car Garage Door w/opener
- Siding + Stone Exterior (Per Plan)
- Architectural Shingles & Standing Seam Metal Roofing (Per Plan)
- 2 Freeze protected Hose Bibs
- Landscaped Front Yard
- 12 x 12 Patio (Per Plan)
- Energy Efficient Windows

## KITCHEN

- Quartz Countertops w/ 6cm Edge
- Stainless Steel Appliances – Gas Range, Dishwasher & Microwave
- Painted Cabinets with Crown Molding
- Single Basin Stainless Steel Sink
- Ice Maker Water Line
- Delta Faucets

## INTERIOR FEATURES

- Textured Holey Smooth Walls and Textured ceilings
- 3 Panel Craftsman Style Doors
- Brushed Nickel Hardware
- Central Air Conditioning. 13 Seer Rated
- Tile in Owner's Shower
- Adult-Height Cabinets in Owner's Bath
- Tile floor in Bathrooms
- 9' Main Level Ceilings
- USB Ports
- Soft-Close Elongated Toilet Seats

## ADDITIONAL INCLUDED FEATURES

- 50-Gallon Water Heater
- Smoke Detectors on each level + Bedrooms
- Carbon Monoxide Detectors

## PEACE OF MIND

- HBA Member in Good Standing
- Energy Efficient Features
- Deadbolt Locks on Exterior Doors
- Programmable Set-back Thermostat
- National Green Building Standard Bronze Level Certification
- 96% High Efficiency Heating Equipment
- Homeowner Orientation and Inspection

## GREAT HOMES!

- National Housing Quality Bronze Award 2022
- Quality Builders Warranty "Builder of Integrity" Award
- 7-Time Best of State Winner
- Parade of Homes Quality and People's Choice Award
- Parade of Homes Most Livable Home Award
- Utah Business Best Company to Work For 20'-21'-22'
- Customer Insight Best Customer Service 2022
- Professional Builder's Housing Giant 20'-21'-22'
- Celebrating 27 Years in Homebuilding
- 4.5 Google Review Rating/5 Star Rating



# Floorplan: The Harrison

## Harrison

Main Level Sq. Ft. 2,063  
Lower Level Sq. Ft. 1,929  
Total Sq. Ft. 3,992



MAIN LEVEL



LOWER LEVEL



# Floorplan: The Jake

## Jake

Main Level Sq. Ft. 1,740  
 Upper Level Sq. Ft. 1,604  
 Lower Level Sq. Ft. 1,583  
 Total Sq. Ft. 4,891

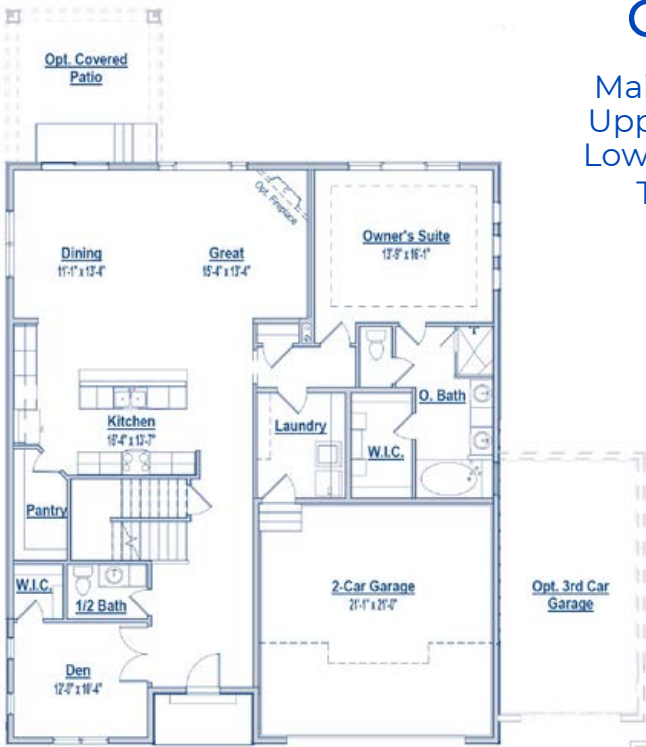




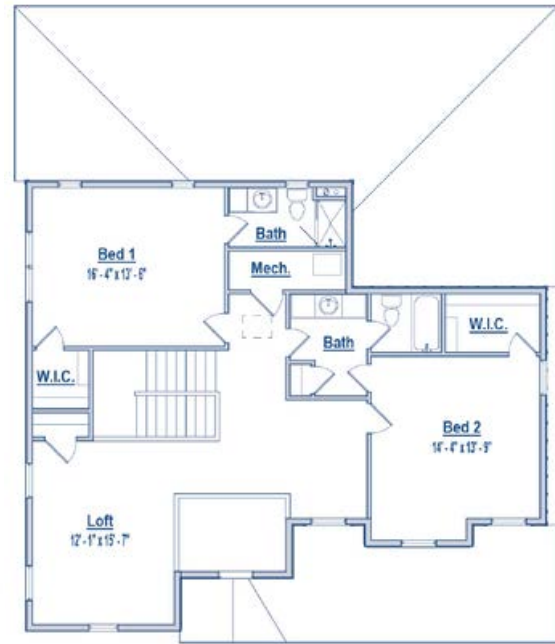
# Floorplan: The Campbell 1

## Campbell 1

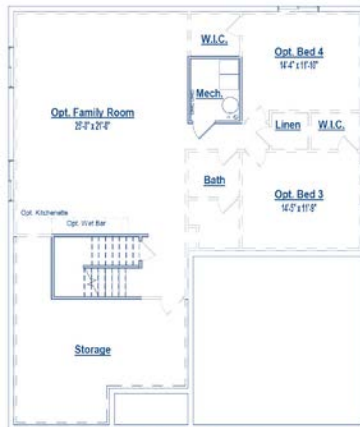
Main Level Sq. Ft. 1,799  
 Upper Level Sq. Ft. 1,319  
 Lower Level Sq. Ft. 1,807  
 Total Sq. Ft. 4,925



**MAIN LEVEL**



**UPPER LEVEL**



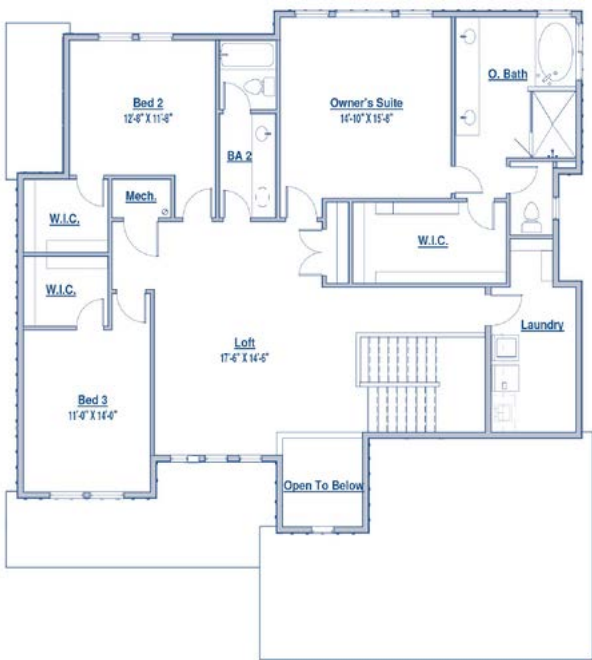
**LOWER LEVEL**



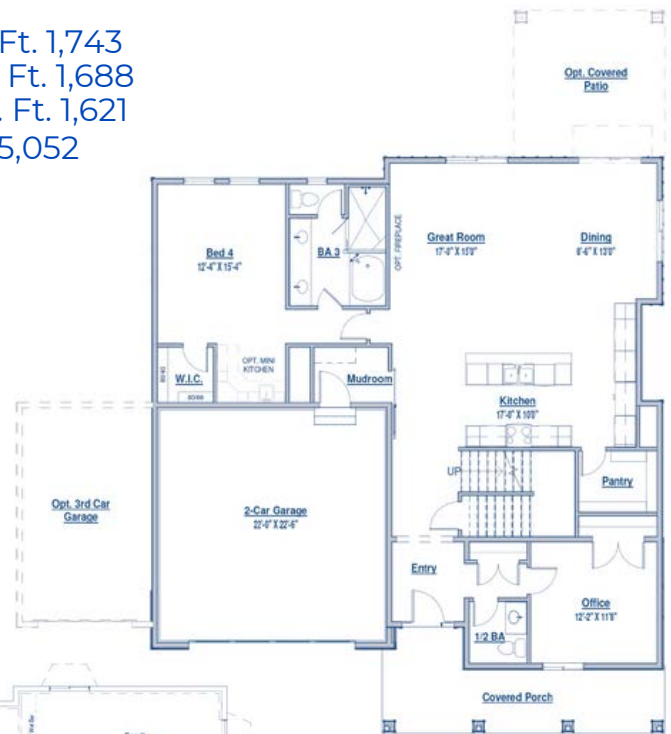
# Floorplan: The Elwood

## Elwood

Main Level Sq. Ft. 1,743  
 Upper Level Sq. Ft. 1,688  
 Lower Level Sq. Ft. 1,621  
 Total Sq. Ft. 5,052



UPPER LEVEL



MAIN LEVEL



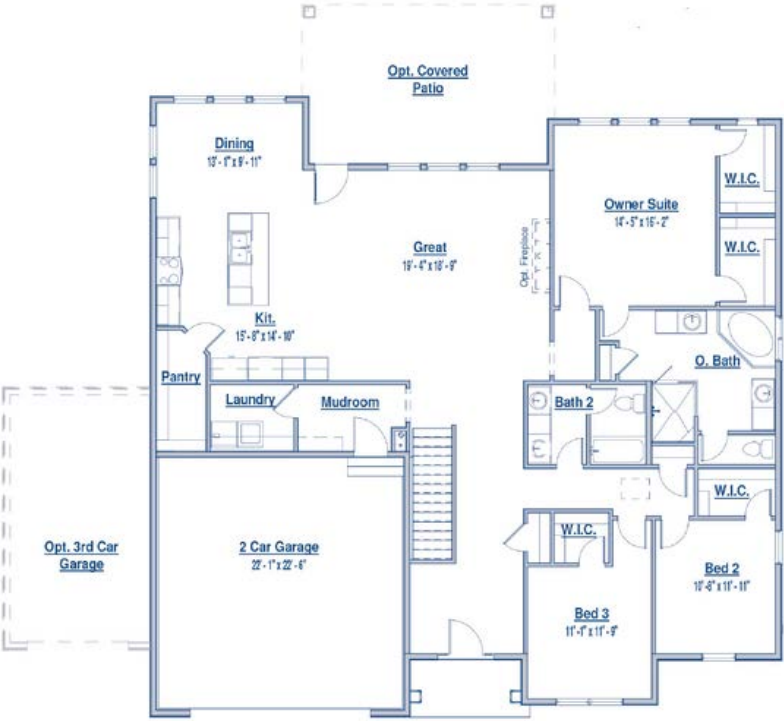
LOWER LEVEL



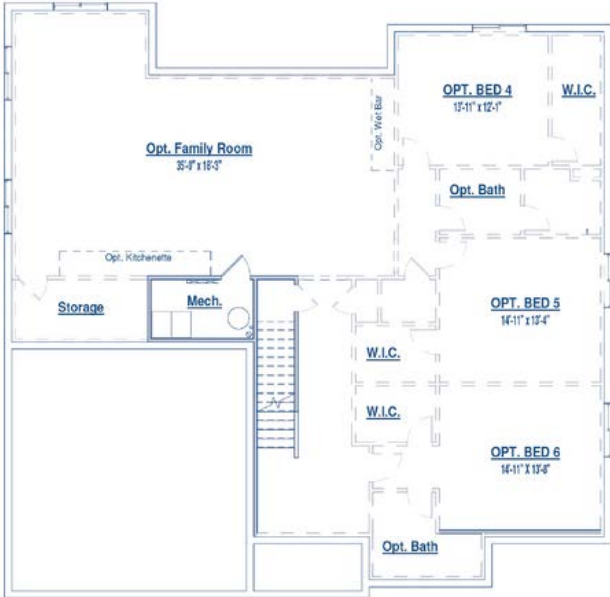
# Floorplan: The Brodie

## Brodie

Main Level Sq. Ft. 2,262  
 Lower Level Sq. Ft. 2,270  
 Optional Upper Level Sq. Ft. 1,040  
 Total Sq. Ft. 5,572



MAIN LEVEL



LOWER LEVEL